



“State of the City – Eau Claire”

Thursday, February 15



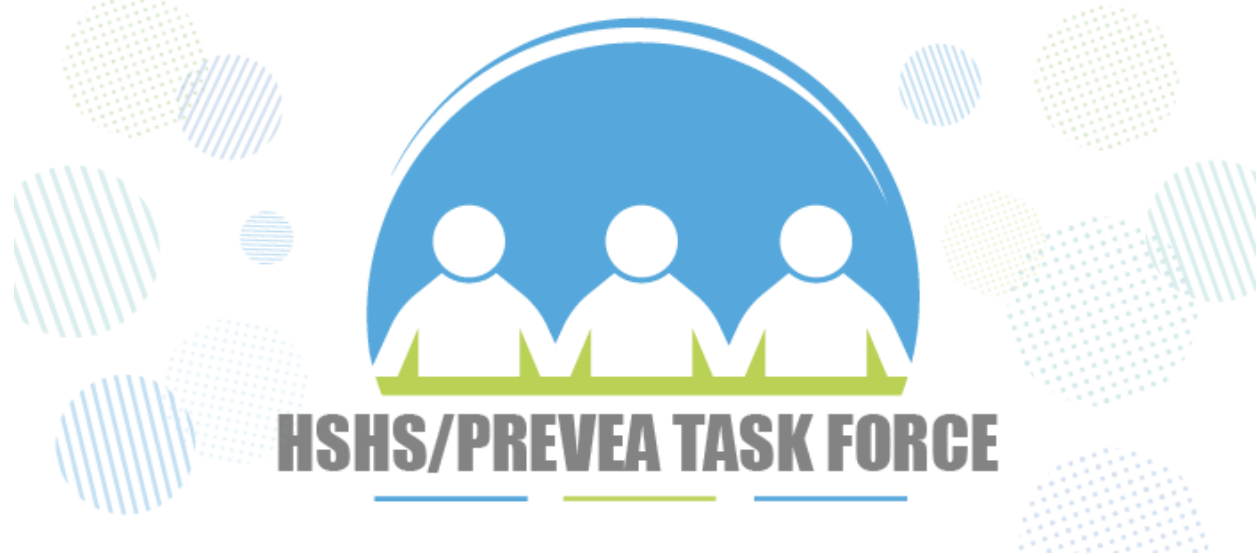
Chippewa Valley

Technical
College



“State of the City – Eau Claire”

Thursday, February 15





“State of the City – Eau Claire”

Thursday, February 15



Thank you to our sponsors!

VISIONARY



ROYAL
CREDIT
UNION

University of Wisconsin
Eau Claire






ECHAMBER

Business Advocacy

Thank you to our sponsors!

ADVOCATE

**Eau Claire Energy
Cooperative**

Your Touchstone Energy® Partner 



EO JOHNSON
BUSINESS TECHNOLOGIES

group health
Cooperative[™]
of eau claire



**Market &
Johnson**
Adding Value to Everything We Do



**NORTHWESTERN
BANK**

WEAU 13 NEWS



win



Thank you to our sponsors!

CATALYST

Benedict Sales & Service

BMO Bank, N.A.

Cascades Tissue Group

CCFBank

City of Eau Claire

Double Forte

Eau Claire County

Godfrey & Kahn

Hoeft Builders, Inc.

Marshfield Clinic -

Medical Center - Eau Claire

McDonough Manufacturing Company

Miron Construction Co., Inc.

PESI, Inc.

Prevail Bank

Ruder Ware, L.L.S.C.

Silver Spring Foods, Inc.

Trubilt Collision Center

U.S. Bank



“State of the City – Eau Claire”

Thursday, February 15



Eggs & issues: Legislative Breakfast

- ***Friday, March 15***

Eggs & issues: State of the City - Altoona

- ***Friday, April 12***



Register now:

30th Annual

Chippewa Valley Rally

February 28, 2024



CHAMBER ALLIANCE

Chippewa Falls • Eau Claire • Menomonie



“State of the City – Eau Claire”

Thursday, February 15

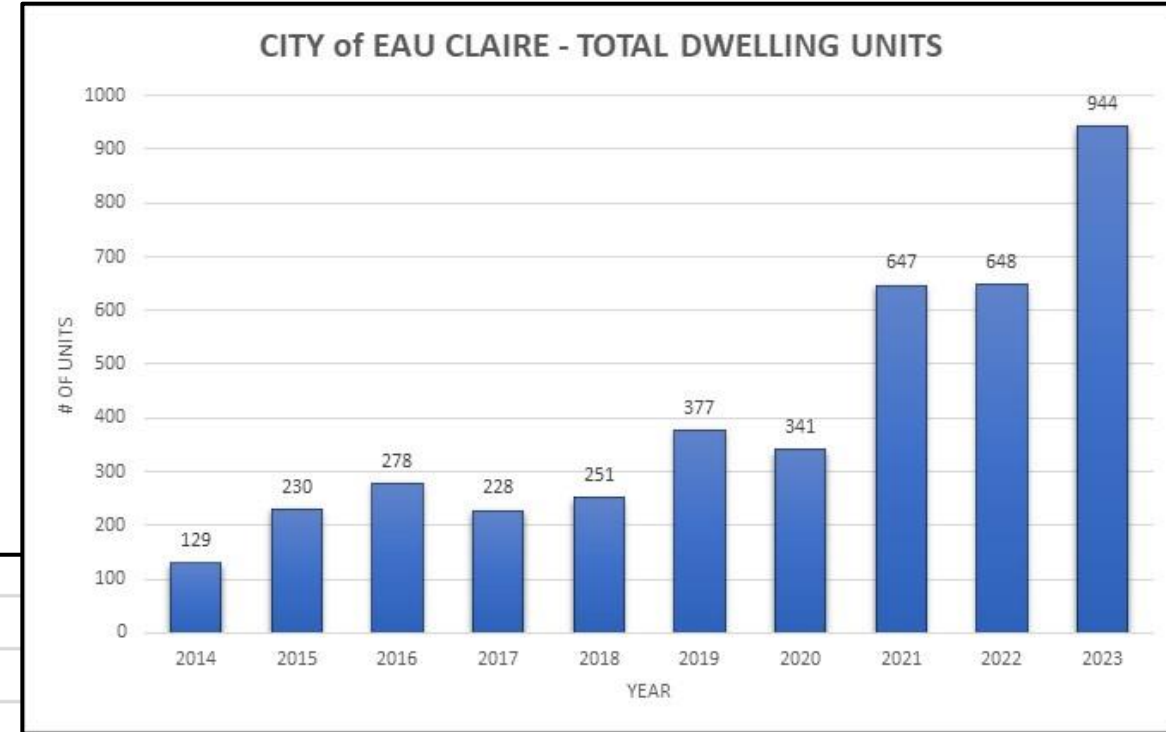
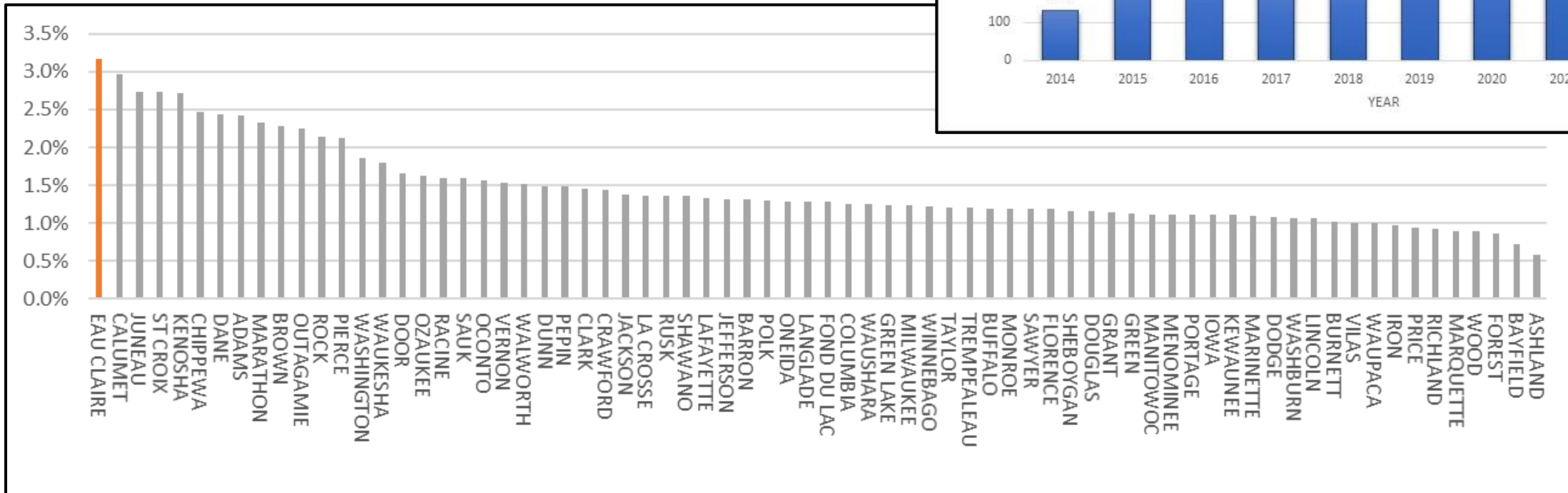
In 2024, we invite you to join us in thinking about....

How do we plan to weather any challenges that come along to not just survive, but to find opportunity in constraints to be the best city in Wisconsin and beyond?

Core Value – Thoughtful Growth and Quality of Life

- Population growth leader
- Net New Construction growth leader
- Record housing unit construction

2023 Net New Construction Eau Claire County



Core Value – Stewardship

Stewardship

- “The careful and responsible management of something entrusted to one's care.”
Merriam-Webster Definition
- The City is tasked with the careful and responsible management of the infrastructure, finances, safety, and trust of the community.

Core Value – Stewardship

Stewardship - Infrastructure

- Maintain current assets
 - 358+ miles of roads, 363 acres of parklands, 29 miles of trails
 - Two cemeteries, Four parking ramps
 - 398 miles of water main, 352 miles of sanitary sewer
- Manage new facilities
 - Transfer Center
 - Library
 - Parks



Core Value – Stewardship

Stewardship - Fiscal Stability

- Referendum implementation
- Local Vehicle Registration Fee
- Evaluation of partnerships
 - EMS/Fire
 - County
 - Innovation fund
- Long-term fiscal stability plan
 - Shorten bond terms
 - Additional revenue sources
 - Financial efficiencies

30 Years of Fiscal Constraints

“OUR REVENUE SOURCES ARE GROWING AT A MUCH SLOWER RATE THAN OPERATING COSTS ARE INCREASING...”

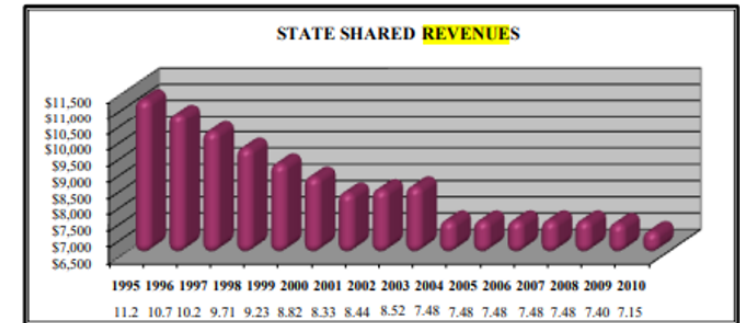
- Don Norrell, 1995

“THE DIFFICULT FISCAL ENVIRONMENT WE FACE MAY PRODUCE CHALLENGES, BUT IT ALSO INVITES THE OPPORTUNITY FOR CHANGE...”

- Mike Huggins, 2010

“THIS IS NOT A FINANCIALLY SUSTAINABLE COURSE...”

-Dale Peters, 2020



Core Value – Stewardship

Stewardship - Systems Building

- Software and systems investments
 - Asset Management
 - Microsoft 365
 - ➔ Paperless Payroll
- Core staffing
 - Finance
 - City Manager
 - Information Technology
 - Inspections
- Performance management
- Support for growth
 - Zoning Overhaul
 - Neighborhood Services
 - Comprehensive Plan Update
- Support for public safety
 - Staffing
 - Building
 - Equipment

NOTES FROM DEPARTMENT DIRECTORS MEETING BANBURY PLACE, 4/14/04

1. Combine stormwater maintenance within City Organization (Parks/PW)
2. Eliminate police/school liaison
3. Reduce library collection purchases to focus on most popular items
4. Advertise on city materials and vehicles
5. Civilianize court and property officers
6. Reduce snowplowing responses
7. Reduce length of workday and workweek to 37.5 hours
8. Reduce number of library items (delete non-book items available from private business (videos).

9. Charge for parking permits for residential streets.

37. Develop an online report system for police department
38. Upgrade city website to provide for public information, communications, and citizen transactions
39. Eliminate costs of green plant maintenance for library
- ➔ 40. Require electronic payroll or contract out
41. Require all departments to use bi-weekly payroll
42. Use video conferencing to training to reduce travel costs



Core Value – Stewardship

Stewardship - Employee and Workforce Well Being

- Actively addressing and increasing workforce morale
- Wage adjustments for hard-to-fill critical positions
- Employer of Choice Survey
 - What non-monetary benefits can the City implement
 - Creative retention and workforce investment efforts
- Maintaining high-quality benefits
- Maintaining trust and respect in the community



**Core Value –
Stewardship**

**Stewardship -
Employee and
Workforce Well
Being**



Core Value – Environmental Sustainability

Summary of Efforts

- PFAS mitigation
 - Will meet proposed EPA PFAS Standards
 - Seeking multiple funding sources
- Pollinator support
 - Established “No Mow May”
 - Creating Pollinator areas throughout the City
- Waste reduction
 - Trash/Waste Study ongoing by Wisconsin Policy Forum
 - Neighborhood composting is being examined
- Carbon goals / Solar Investment
 - Partnerships with Xcel Energy
 - 100% renewable energy and carbon neutrality by 2050

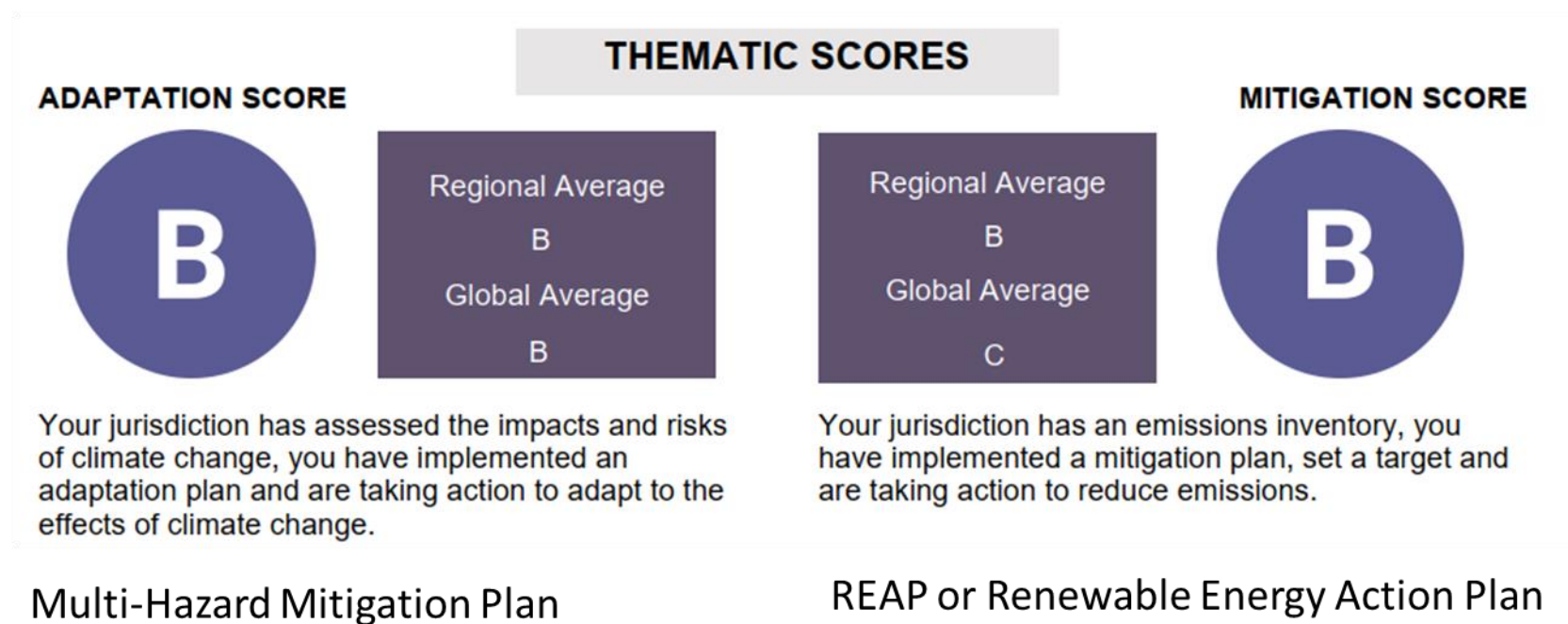


Core Value – Environmental Sustainability

2050 Goal

- The City has a goal to reach 100% renewable energy and carbon neutrality by 2050
- This goal covers municipal operations and the community within city limit

Carbon Disclosure Report's Annual Score



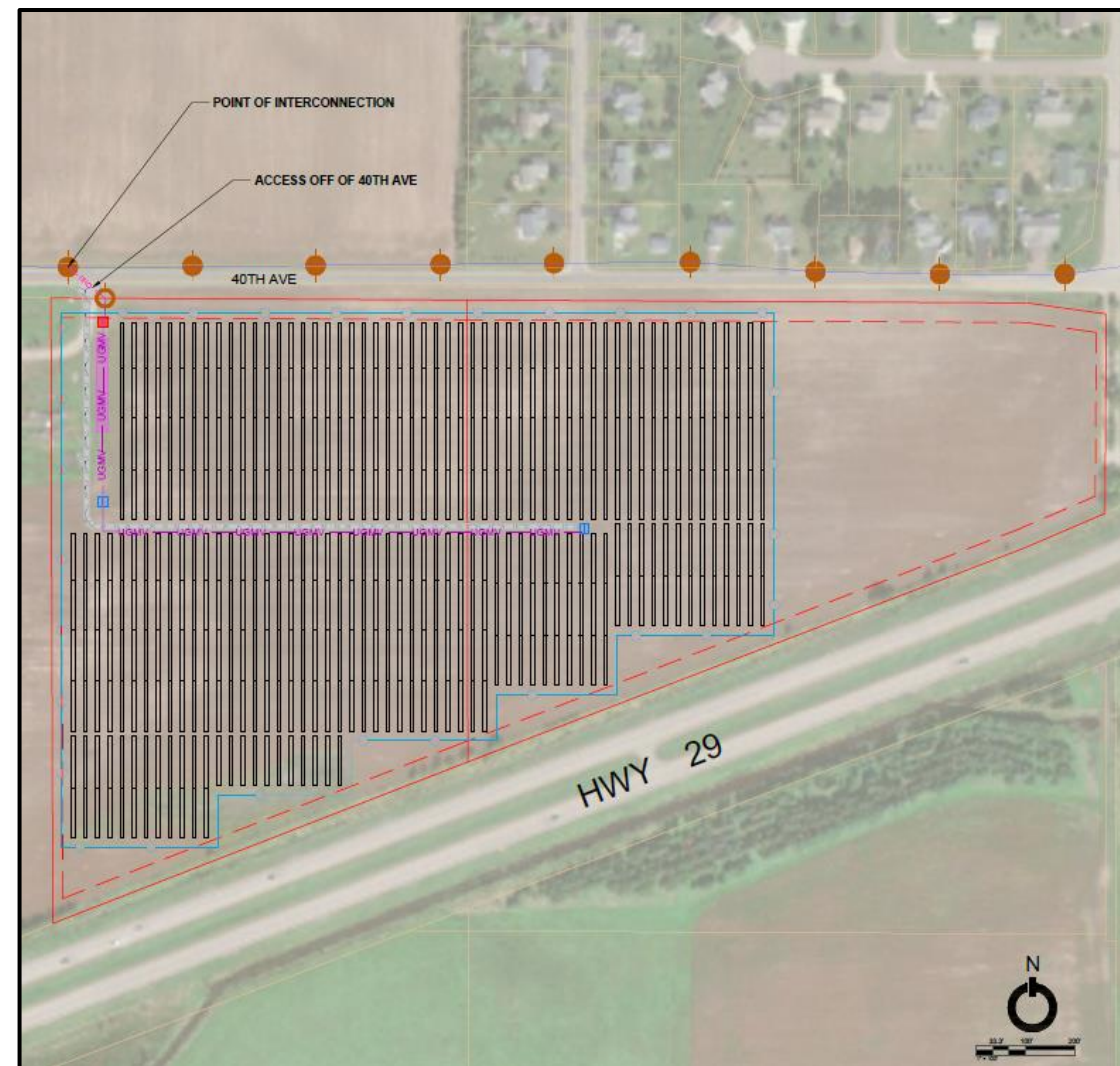
Core Value – Environmental Sustainability

Xcel Energy's Empower Solar Agreement

- City Council entered into agreements with Xcel for 1.3 Megawatts in a new 2025 solar farm
- Powers various City buildings that are not good for on-site solar



Example of Solar Farm



Location of New Solar Farm

Core Value – Environmental Sustainability

Energy Efficiency Navigator Program

- Partnering with non-profit Elevate
- Supporting existing naturally occurring affordable housing by assisting in the retrofit of sustainable home improvements
- Leveraging \$130K from the Energy Efficiency and Conservation Block Grant Program



Duplex with Solar & Heat Pumps

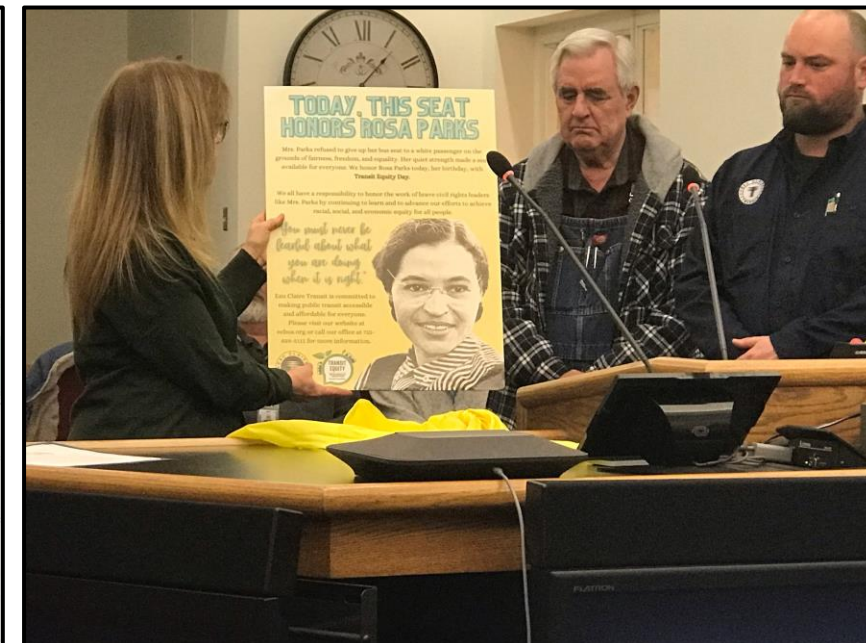
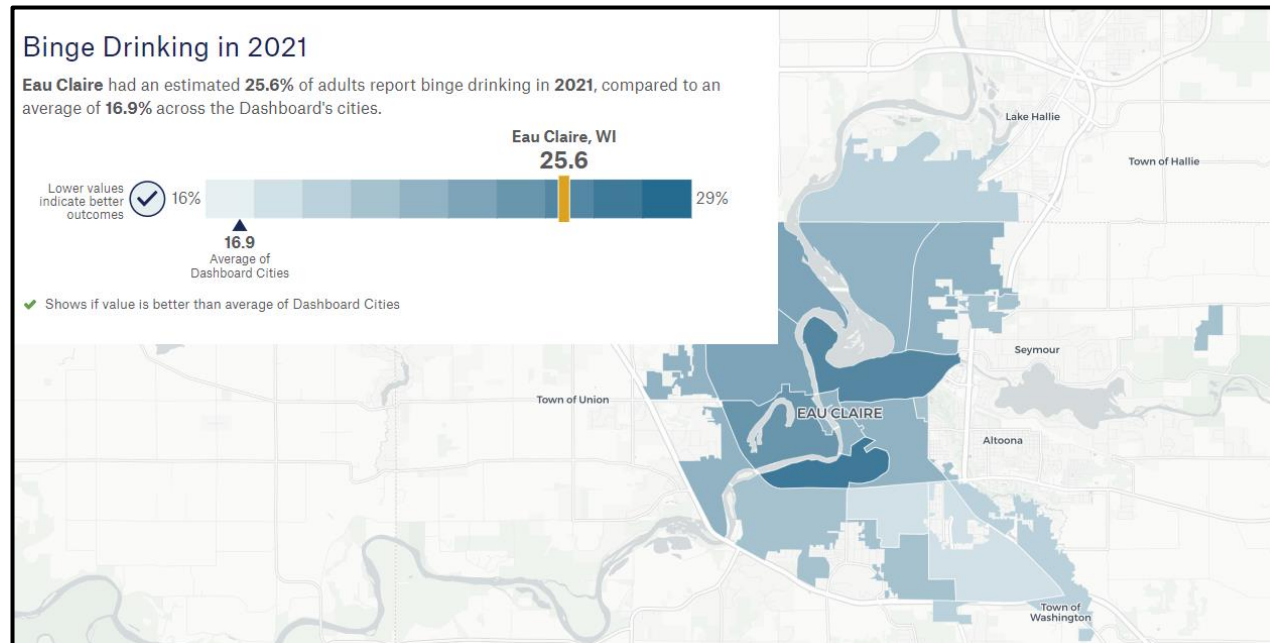
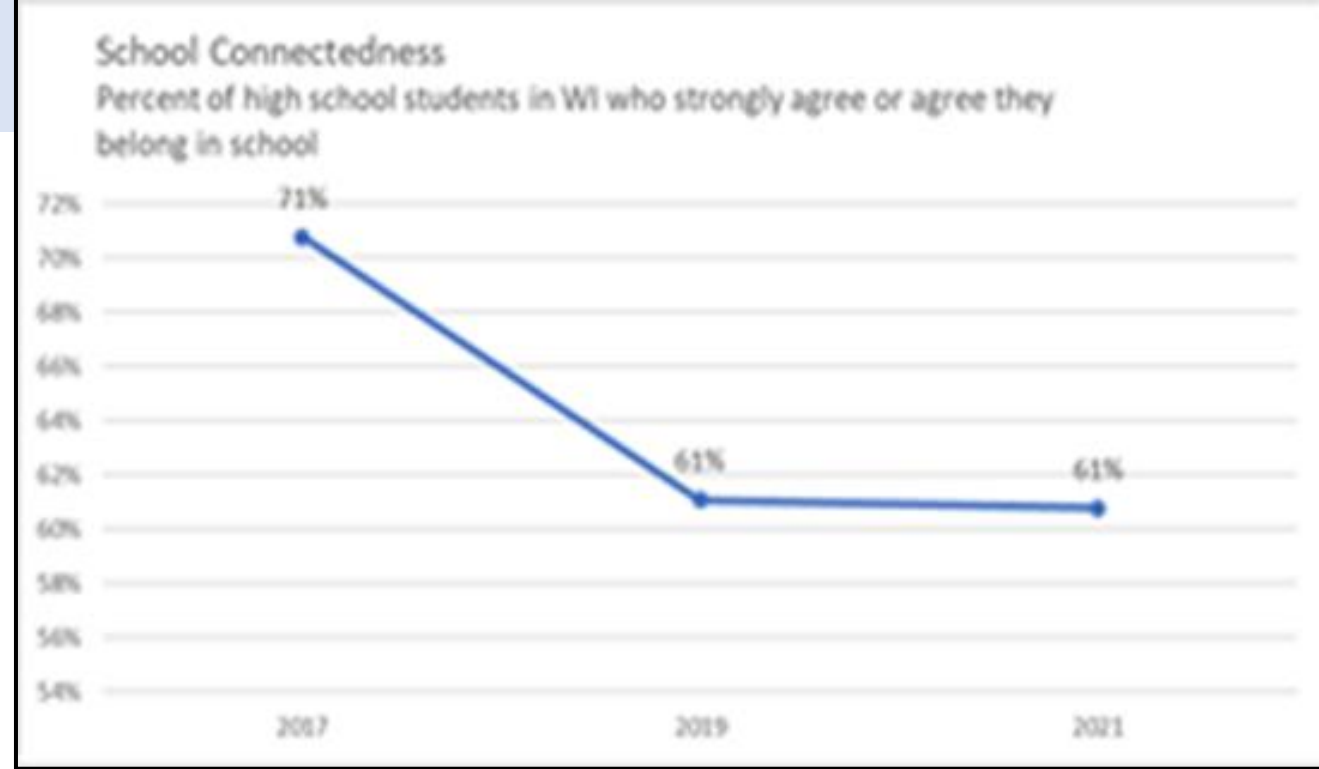
Core Value – Equity and Supports

Equity, Diversity, and Inclusion

- Strategic Planning

Community Supports

- Teen mental health
- Invest Health
- Unhoused residents
- Transit Community Pass



CITY OF
EAU CLAIRE

A Resilient Eau Claire





Our government is a complex toolkit – each person and division is a piece of the puzzle.



DEVELOPMENT & OPERATIONS

Engineering	Community Development <ul style="list-style-type: none"> • Inspections • Housing • Planning • Economic Development
Community Services <ul style="list-style-type: none"> • Forestry • Streets • Utilities • Parks • Recreation • Transit 	

CITY MANAGER'S OFFICE

Clerk & Elections	Media/ Communications
Equity, Diversity, & Inclusion	EauStat
Neighborhood Services <ul style="list-style-type: none"> • Code Enforcement • Parking • Customer Service 	

CORE ADMIN DEPARTMENTS

Finance <ul style="list-style-type: none"> • Financial Ops • Assessing • Purchasing • Accounting 	City Attorney
Human Resources & Risk Management	Information Technology

PUBLIC SAFETY

Police <ul style="list-style-type: none"> • Communications Center • Patrol • Investigation • Professional Standards 	Fire <ul style="list-style-type: none"> • Rescue • Fire Suppression • Fire Prevention
--	---

COMMUNITY

Library	Health
----------------	---------------

What tools are we using to achieve growth and stay resilient?

We are investing in building blocks...

Cory Tietz: Investing in building blocks



Asset Management

Developing Effective, Accountable, and
Transparent Government



ASSETS

Know what you have, where it is, and what condition it's in.



WORK

Create, assign, and track tasks from anywhere with a truly mobile workforce.



RESOURCES

Estimate, assign, and track labor, equipment, materials, and vendors.



INFRASTRUCTURE PLANNING

Model asset scenarios and develop data-driven plans for the future

Cory Tietz: Investing in building blocks

Asset Management Domains

Managing Every Asset



Transportation



Walkability



Signals



Parks &
Recreation



Facilities



Stormwater



Water
Distribution



Water
Treatment



Wastewater
Treatment



Wastewater
Collection

Phillip Lubke: Investing in building blocks

Launch of Neighborhood Services

- Enforcement of City Ordinances pertaining to Public Nuisances
- Enforcement of City Ordinances pertaining to trash and waste management/hauling
 - Took over from City/County Health Department on Jan. 1st, 2024
 - Trash Hauling study – Wisconsin Policy Forum
- Downtown parking enforcement
 - Took over from Eau Claire Police Department on Jan. 1st, 2024
 - Updating parking survey



The graphic features a top section with a yellow background showing a red car, a white car, and a blue car. Below this, a circular inset shows a map with a pencil pointing to a location. Another circular inset shows a blue 'P' parking sign. The text 'DOWNTOWN PARKING SURVEY' is prominently displayed in yellow and white. Below the title, a short paragraph explains the survey's purpose. A QR code and a URL are provided for more information. At the bottom, contact information for Downtown Eau Claire is listed.

**DOWNTOWN
PARKING
SURVEY**

Downtown Eau Claire, Inc is looking for your feedback on a parking survey addressing parking in the downtown district. Your input will help inform the next phase of planning for parking initiatives in Downtown Eau Claire.

 <http://tinyurl.com/dtparkingsurvey> 

For more information or questions, contact: downtown@eauclairewi.gov
715-839-8063



Phil Lubke: Investing in building blocks

Public Nuisance - 9.36 – Public Nuisance

- Definition: any thing, act, use or condition of a building or land that interferes substantially with the comfortable enjoyment of life, health or safety of another person or the public
- Accumulations of refuse, trash, wood products, furniture, metal items, construction materials - to such an extent that it causes blight



Phil Lubke: Investing in building blocks

- 8.32.010 – Management of waste and recyclables
 - Vehicle inspections for licensed haulers
 - Covered haulers w/tarps
 - Garbage trucks can't leak fluids from load
 - Storage and proper placement of garbage/recycling containers for collection
 - Keep out of sight of roadway
 - Only put out during allowable times
- 8.32.120 – Prohibited practices
 - Storage of furniture – no indoor furniture allowed to remain outside
 - Abandoned appliances
- 8.36 – Inoperative Motor Vehicles

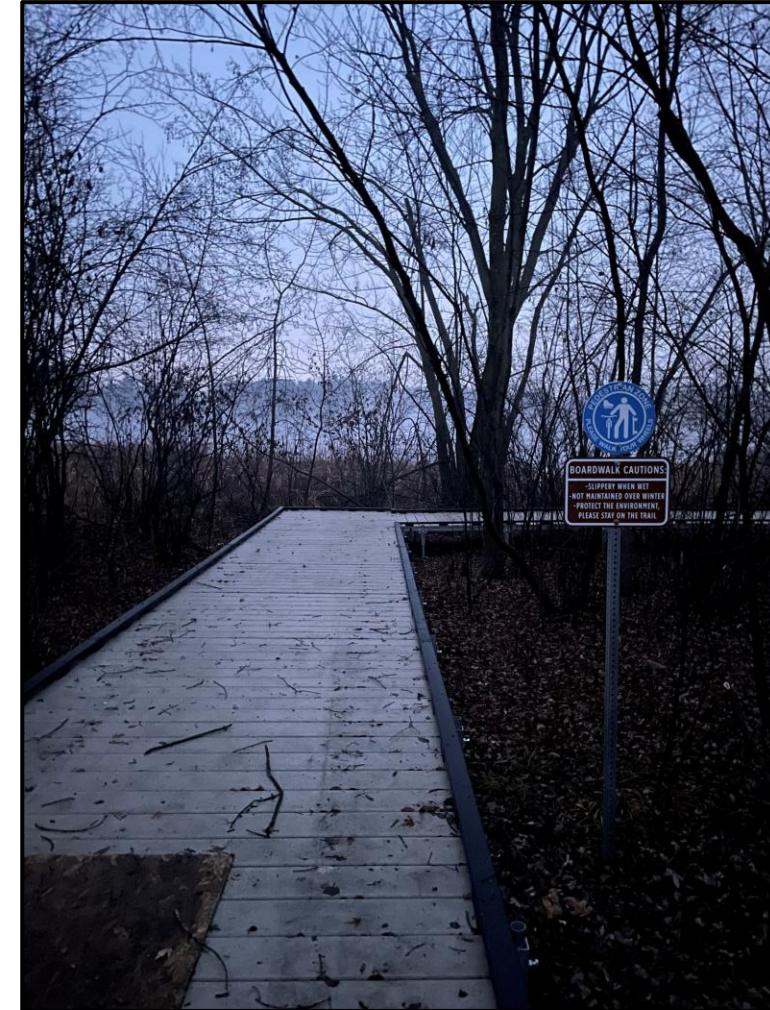
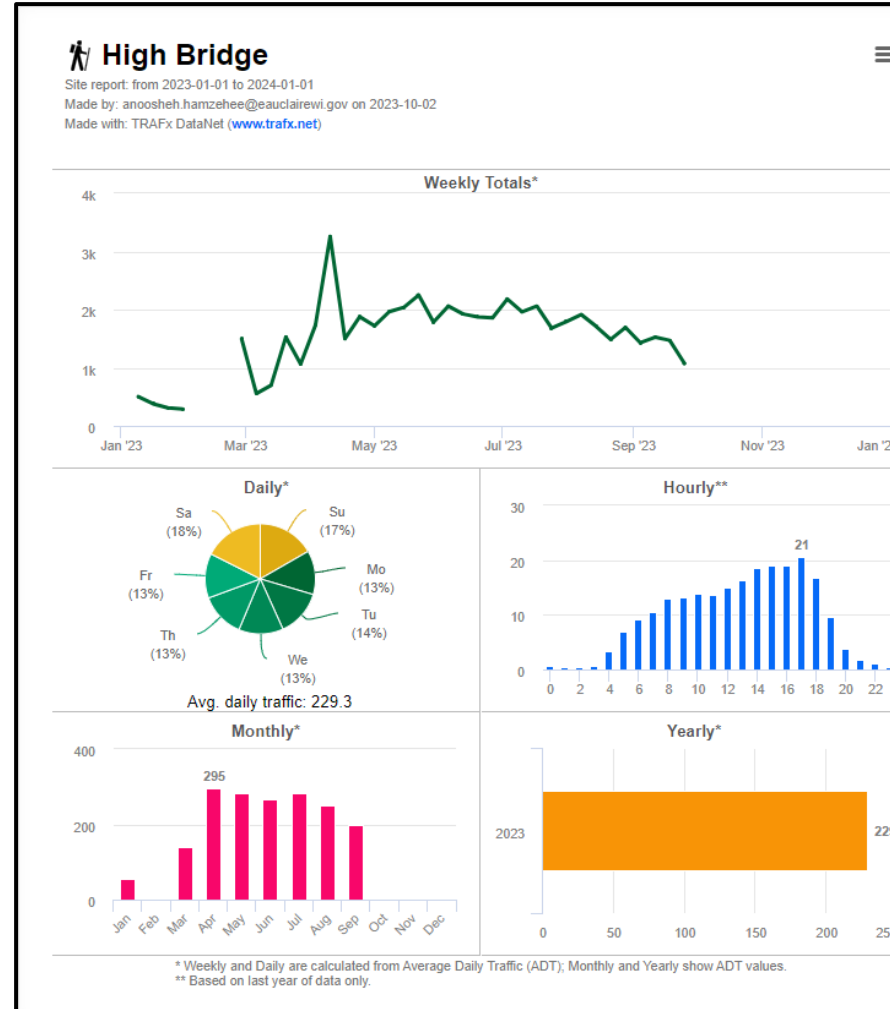


We are making sure Eau Claire is an inclusive, vibrant,
and easy place to live...

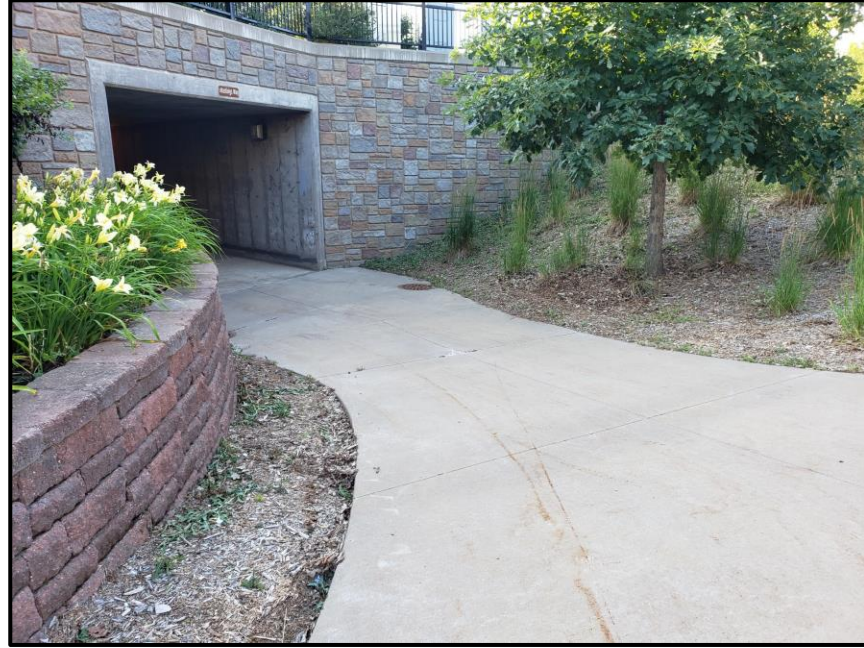
Leah Ness: Building and preserving trails, parks, and mobility

Parks, Trails, and Mobility

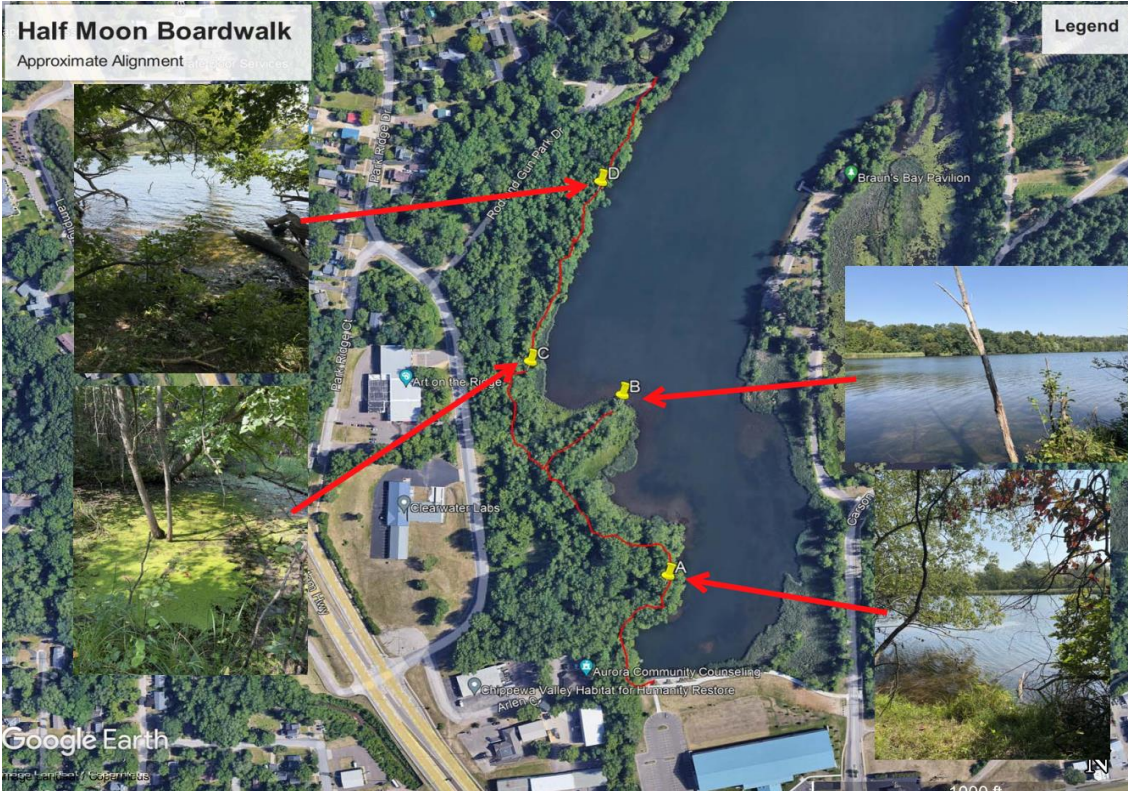
- Parks and Trails are assets to the City
- Multiple Division work together to make the Trails and Parks a success
- Engineering activities include:
 - Monitor construction
 - Design coordination and layout of utilities in parks



Leah Ness: Building and preserving trails, parks, and mobility



Leah Ness: Building and preserving trails, parks, and mobility



Anoosheh Hamzehee: Welcoming all to our community

Equity, Diversity, and Inclusion Goals

- BIPOC Steering Committee has been established to assess progress and identify growth areas
 - Community and Government Sub-Committees formed
 - Gathering feedback through a public survey and consultations with stakeholders
- The City has hired a consultant to develop an Equity, Diversity, and Inclusion (EDI) strategic plan in collaboration with the BIPOC Committee



FINAL REPORT OF THE EAU CLAIRE COMMUNITY TASK FORCE ON RACIAL JUSTICE

MISSION STATEMENT

- The goal of the Community Task Force on Racial Justice is to recommend strategies that the community can adopt to reduce prejudice and discrimination based on race and ethnicity.
- The Task Force will gather information through various community outreach efforts, evaluate this information, and develop recommendations for the City Council and other civic leaders.
- Implementation of these recommendations will enable the city to achieve a clearer understanding of how racism affects the lives of everyone as we build a community enriched by its diversity.

BACKGROUND

In November 1994 University of Wisconsin-Eau Claire Chancellor Larry Schnack and Eau Claire City Council President Mark Lewis appointed a University-Community Committee on Racial Diversity to look at issues related to the problem of racism in Eau Claire. The eighteen member committee was specifically charged with identifying "community needs for such things as education/training, cooperative programs/activities, opportunities" and with making "recommendations for other areas of study which the University, City, and other organizations might address."

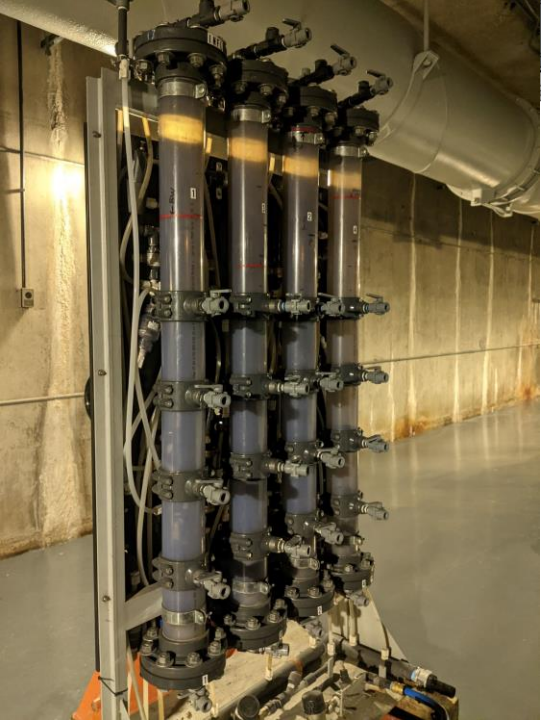
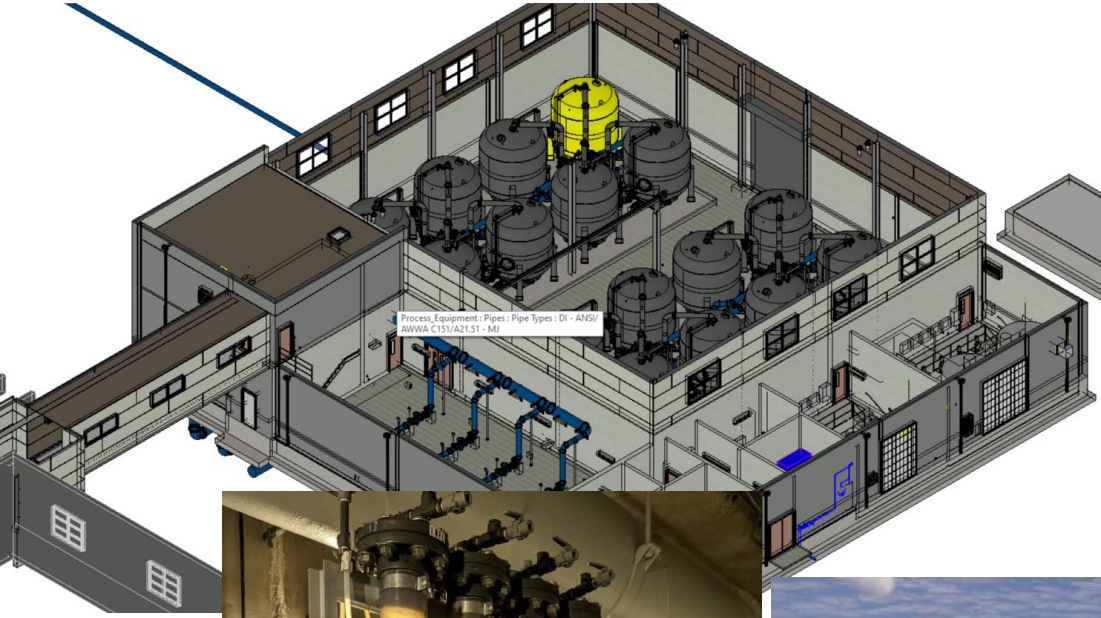
We step up to problem solve to thorniest challenges...

Ben Spanel: Problem solving through technical solutions

PFAS Mitigation

- Process started in July 2021
- Removed specific wells from service, yet continue to meet daily water demand
- Contract with an engineering firm for the design of PFAS removal addition at WTP
 - Conducted pilot testing of eight removal media to determine the best one for PFAS removal
 - Design is currently at 90% completion
 - PFAS removal vessels are out to bid now to ensure timely delivery during construction
 - Remaining project will be out to bid in March, with construction in July
- Several sources of funding for the project, which is estimated to cost \$23 million
 - City of Eau Claire Capital Improvement Plan
 - DNR Safe Drinking Water Loan with a portion of principal forgiveness
 - 2023 Community Service Grant from Senator Baldwin
 - Working with Representative Van Orden for a 2024 Community Service Grant

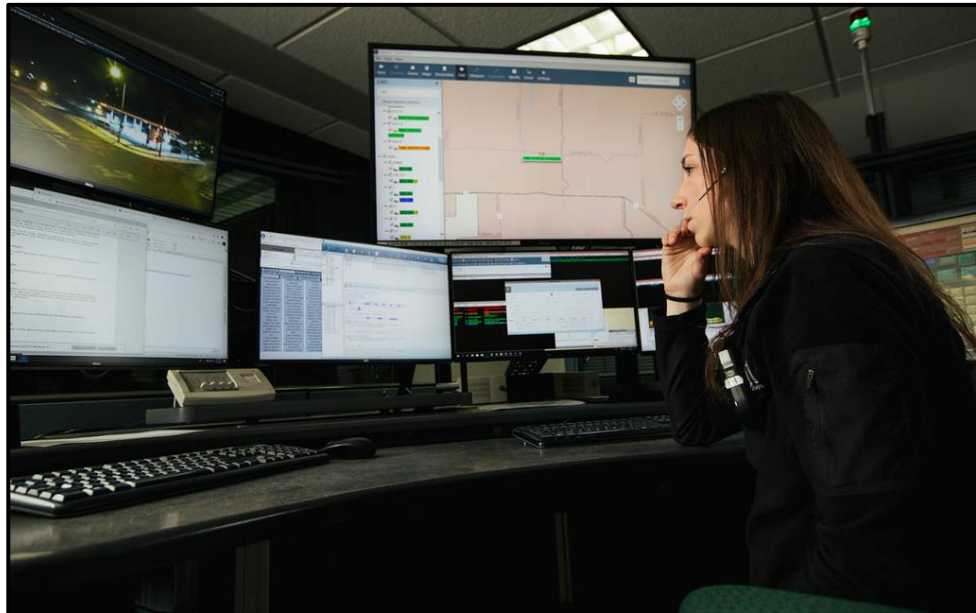
Ben Spanel: Problem solving through technical solutions



Jon Schultz: Making sure life-saving help arrives on time

Overview of EMS

- EMS for the City of Eau Claire and 13 other municipalities
- Call to 911: Emergency Medical Dispatch
- First Response: Law Enforcement, First Responders, Fire
- BLS – EMT, ALS – Paramedic (32 medications, RSI, LUCAS)
- Impact of hospitals closing



Jon Schultz:
Making sure life-
saving help
arrives on time



COUNTY WIDE AMBULANCE RESPONSE

Printed: 7/27/2020

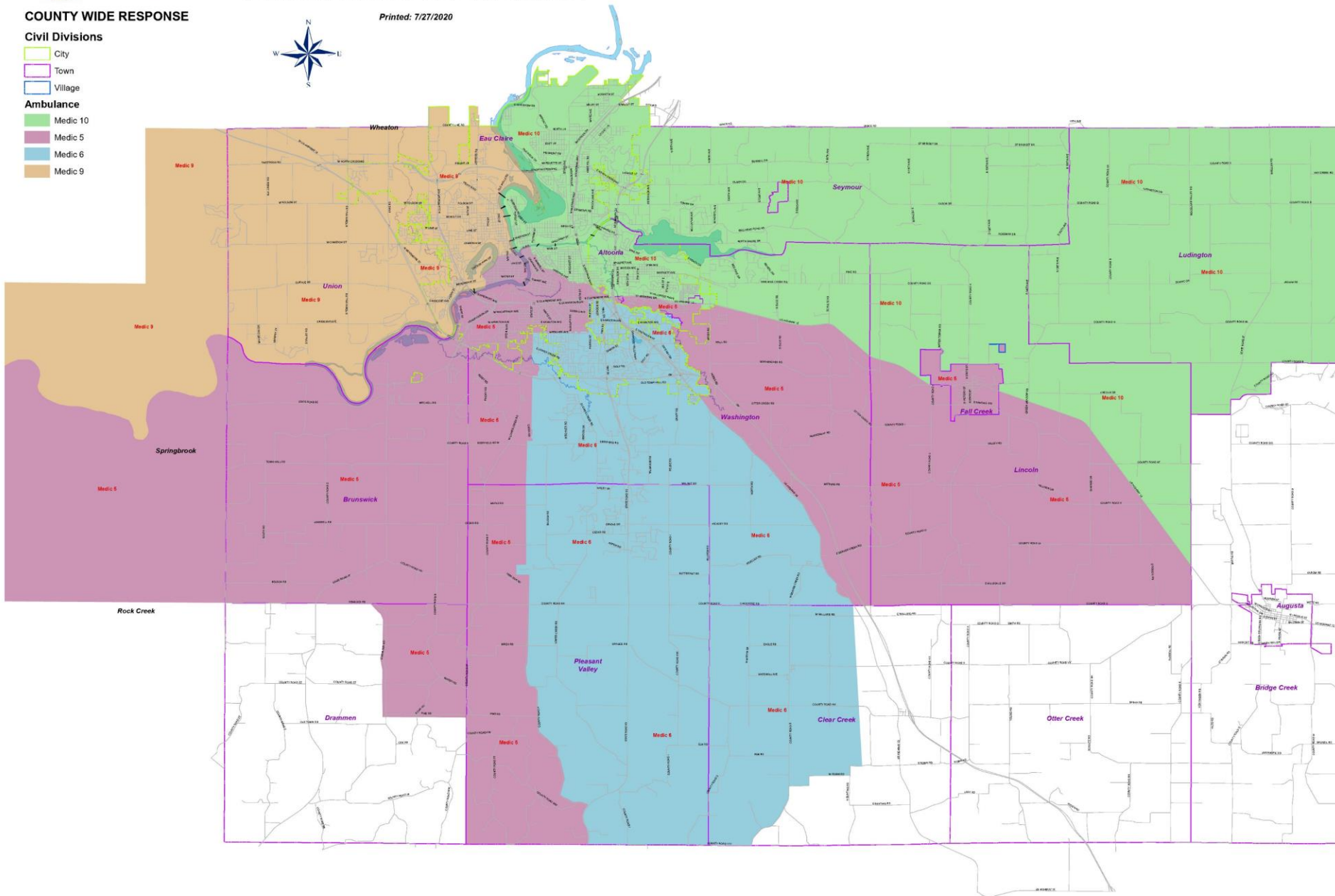
COUNTY WIDE RESPONSE

Civil Divisions

- City
- Town
- Village

Ambulance

- Medic 10
- Medic 5
- Medic 6
- Medic 9



Billie Hufford: Tackling the incredibly complex challenge of housing

- ARPA Funding for Housing Initiatives
 - Affordable Housing Fund 2023 (Home for Good, Hmong Mutual Assistance Association)
 - Community Land Trust (RFP in progress)
 - Housing Community Development Corporation
 - Identifying process
- Day Shelter
 - Assisted in locating a new temporary location
 - Working with agency partners to identify a permanent location that includes various resources and flex space for other agencies
- Street Ambassadors
 - Met with Block by Block
 - Identifying funding source


Billie Hufford: Tackling the incredibly complex challenge of housing



Final Core Value – Community Engagement and Connectedness

Community Engagement

- District meetings
- Resident survey
- Weekly newsletter
- Review of engagement approaches



Resident Survey - Eggs & Issues

The City is undertaking a resident survey, which we hope to repeat on an annual basis to evaluate how we are doing. Please take a minute to complete this draft version. We are piloting the survey with the Eggs and Issues attendees, and we appreciate your feedback on how well taking the survey works for you.

① ② ③

How do you rate the overall quality of life in eau claire?

Poor Fair Good Excellent No Opinion

Have you attended a City organized Public Meeting* in the past year?

No Yes

*Public Meetings include City Council meetings, one of various Boards, Commissions, and Committees, Informational Meetings or Open Houses of City-wide interest (street projects, referendum, etc.)

How do you rate the quality of the following municipal services?

*City Organized Recreation Programs include Prime Times activities, the Clearwater Winter Parade, Fairfax Pool, etc.

**Code Enforcement includes investigating and acting on resident complaints about excessive weeds, trash, winter sidewalk snow removal, etc.

***Health Department Services includes restaurant inspections, housing inspections, immunization, WIC, family planning, narcan training, new baby visits, and more.

	Poor	Fair	Good	Excellent	No Opinion
City Parks / Trails	<input type="radio"/>	<input type="radio"/>	<input type="radio"/>	<input type="radio"/>	<input type="radio"/>
City Organized Recreation Programs*	<input type="radio"/>	<input type="radio"/>	<input type="radio"/>	<input type="radio"/>	<input type="radio"/>
Police Services	<input type="radio"/>	<input type="radio"/>	<input type="radio"/>	<input type="radio"/>	<input type="radio"/>
Condition of City Streets	<input type="radio"/>	<input type="radio"/>	<input type="radio"/>	<input type="radio"/>	<input type="radio"/>

City Manager's Weekly Update 1/19/2024: Outdoor Rinks, Life Saving Rescue, Northwest Park Turnaround, Forestry Grant

Post Date: 01/20/2024 6:56 AM

Hello City of Eau Claire residents, staff, and Council Members,

Here's some news from around the City for this week. As a reminder, [prior updates can be found here](#), and people can [sign up for City updates here](#). Feel free to [send me feedback](#).

CITY UPDATES:

Rinks Opening: We are happy to share that, after a warm start to the winter, a number of rinks are open! Roosevelt, Pinehurst, Boyd, and Putnam Heights rinks and warming shelters will be open starting Saturday, January 20th. Hours of the warming shelters can be found here: <https://www.eauclairewi.gov/recreation/outdoor-skating-rinks>. Outdoor rinks can be used when the warming shelters are not staffed, and lights will be on, based on a timer, from 4 to 10PM. Please check the Eau Claire Parks, Recreation, & Forestry Facebook page at www.facebook.com/cityofecpr for outdoor rink updates throughout next week as the weather gets warmer. As a reminder, please stay off the rinks if there is water on the surface.

The Recreation Department shared this thank you to our Parks Crews who have been working hard to freeze the rinks (pictured below) in what has been a comparatively small window of cold weather: "We want to send a sincere thank you to our Park Crews for doing an amazing job and braving the cold weather we've had this week to prepare the rinks. If you see them, send them a thank you! We're very fortunate to have these amazing individuals work for us!" One Facebook commenter phrased it well: "Thank you for freezing so we can have fun!"



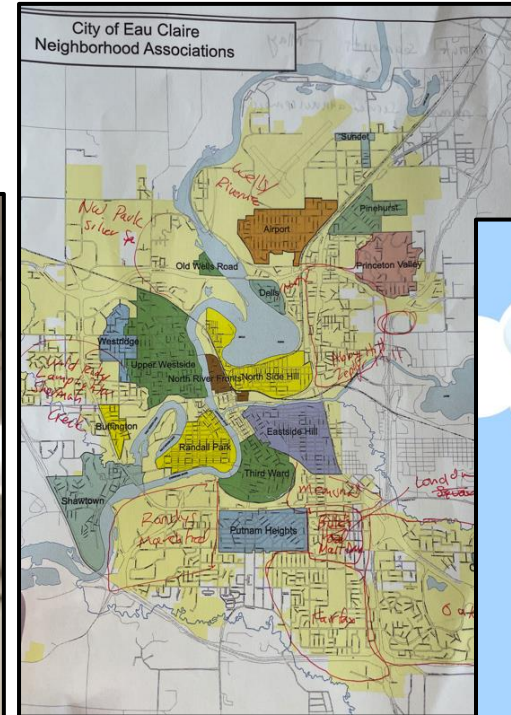


Final Core Value –
Community
Engagement and
Connectedness



Final Core Value – Community Engagement and Connectedness

Community Connectedness



NEIGHBORHOOD LEADERSHIP SUMMIT

Join JONAH Saturday, February 3rd from 9am to 1pm for a Neighborhood Leadership Summit.
L.E. Phillips Senior Center 1616 Bellinger St

Attendees will experience tools to run effective meetings and work as a team, and leave with an understanding of why collaboration and relationship building is essential for achieving organizational goals.

Lunch and snacks will be provided.
Current and future neighborhood leaders welcome.

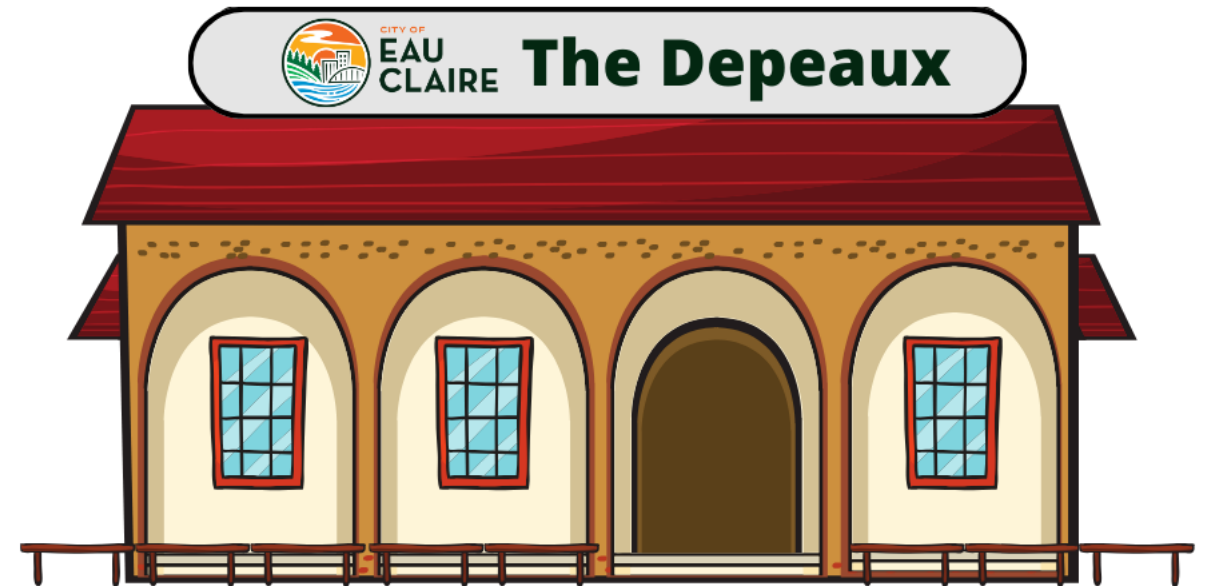
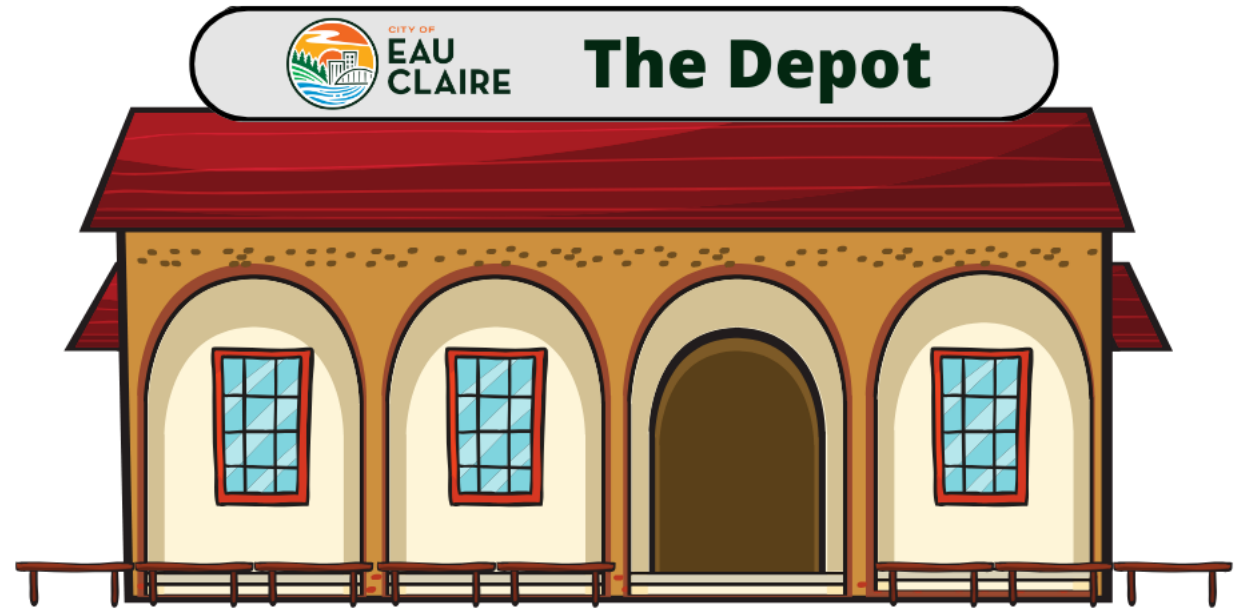
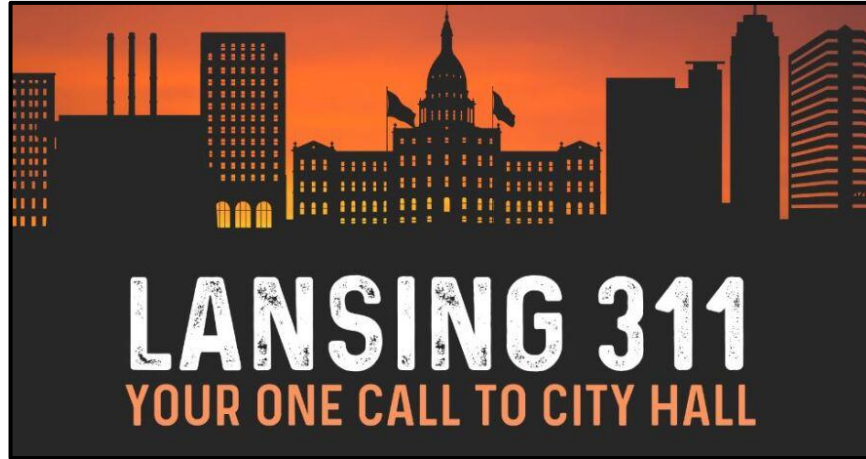
Sponsored by Eau Claire Neighborhood Associations (ECNA)

Please register to help us plan for lunch:
<https://forms.gle/ZcoVQ3gVXjT2h6xo7>



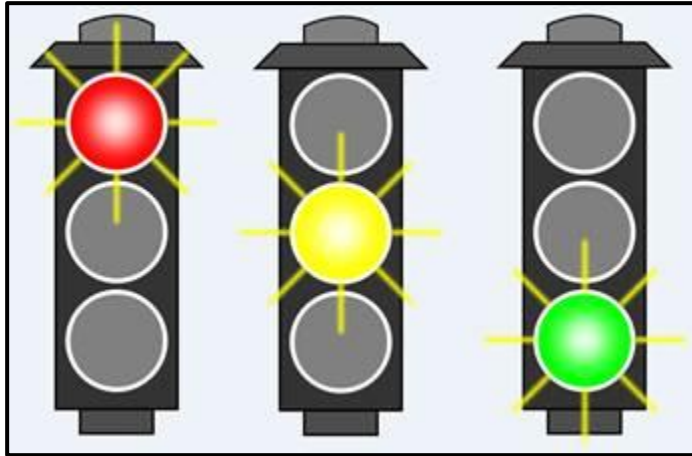
Final Core Value – Community Engagement and Connectedness

Customer Service



Final Core Value – Community Engagement and Connectedness

Strategic Planning



CITY OF EAU CLAIRE, WI

STRATEGIC PLAN

OUR VISION

Eau Claire is a vibrant city with exceptional quality of life and services.

OUR STRATEGIC VALUES

- **We believe in making Eau Claire a great city** - a place where all people feel “at home,” experience a high quality of life, and can reach their potential.
- **We believe that local government is a stewardship** - We help citizens meet their needs and help the community solve problems. We cannot always do this on our own; we need and value partners who can help.
- **We believe in sustainability** - We must balance the needs of current and future generations in our decisions and investments. This affects our financial, environmental, and development decisions. Today’s decisions should not come at the expense of future generations’ opportunities.
- **We believe in equity** - We must create conditions for all people to thrive and proactively address disparities in health, social, and economic prosperity.

PILOT Survey Results



“State of the City – Eau Claire”

Thursday, February 15