



**“The State of Eau Claire County”**



Thank you to our sponsors!

VISIONARY



ADVOCATE



CATALYST

Banbury Place/Cigan Properties      McDonough Manufacturing      U.S. Bank  
Double Forte      Ruder Ware, L.L.S.C.      von Briesen & Roper s.c.  
CCFBank      Trubilt Collision Center



## **Eggs & Issues: “State of the City – Eau Claire”**

- *Friday, February 17, Pablo Center*

## **Eggs & Issues: Legislative Breakfast**

- *Friday, March 31, CVTC Business Education Center*

## **“Eau What A Night” The Chamber’s 108th Annual Meeting**

- *Wednesday, January 15, Pablo Center*

## **29th Annual Chippewa Valley Rally**

- *Wednesday, February 22, Madison*



**“The State of Eau Claire County”**



# 2023 Address to the Eau Claire Area Chamber of Commerce

---

January 20, 2023

# What are Counties?



# Economic Metrics

## Trended Economic Indicators - 2018-2022

Economic Indicator	2018	2019	2020	2021	2022 YTD
Interest Collected on Delinquent Taxes	\$ 328,150	\$ 338,310	\$ 339,006	\$ 345,416	\$ 271,662
Penalties Collected on Delinquent Taxes	\$ 168,129	\$ 170,271	\$ 169,165	\$ 173,139	\$ 135,710
Zoning/Permits	\$ 366,915	\$ 383,408	\$ 353,166	\$ 459,438	\$ 377,388
Real Estate Transfer Fees	\$ 315,604	\$ 325,795	\$ 381,982	\$ 449,273	\$ 459,855
Register of Deeds Filing Fees	\$ 309,259	\$ 408,162	\$ 375,175	\$ 416,344	\$ 307,060
Interest Earned on Investments	\$ 435,089	\$ 618,948	\$ 169,978	\$ 33,825	\$ 507,257

# Economic Metrics

	2020	2021	2022
Total YTD	\$ 9,080,355	\$ 10,848,443	\$ 11,462,710
Budget	\$ 10,850,960	\$ 10,500,960	\$ 11,718,000
Actual Collections	\$ 10,982,263	\$ 12,947,112	
Surplus	\$ 131,303	\$ 2,446,152	

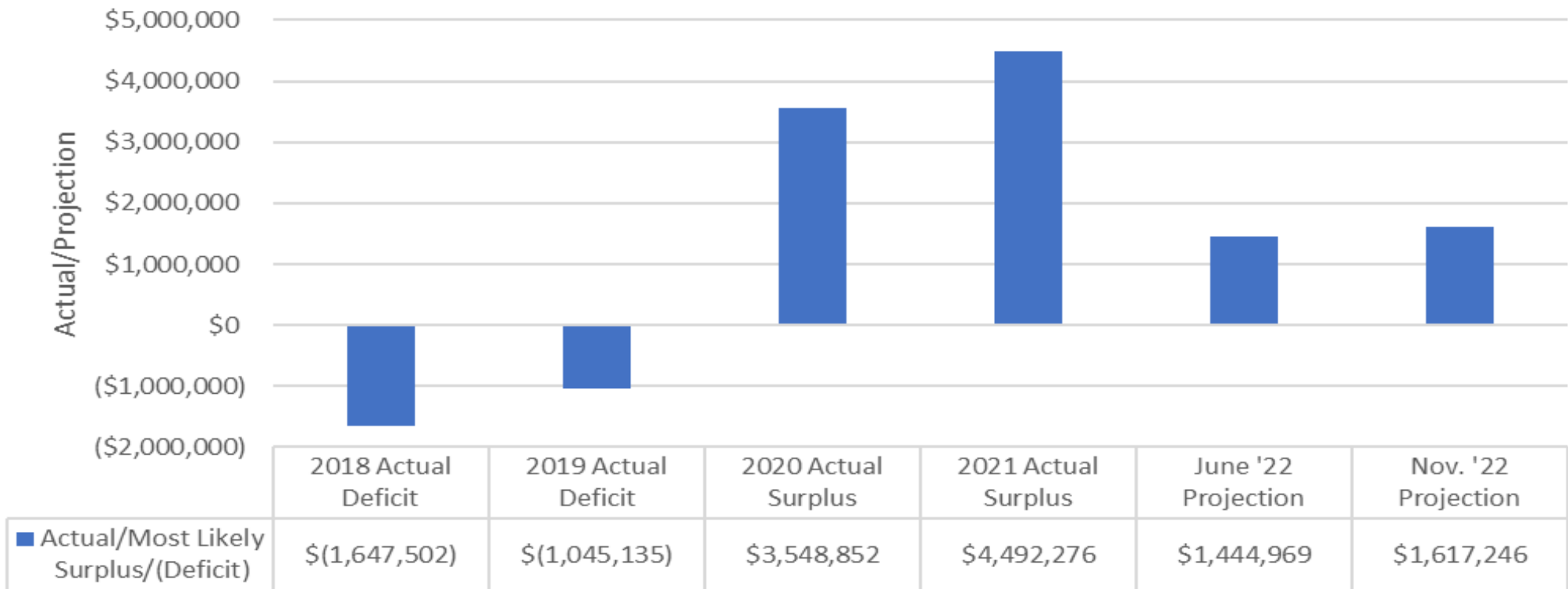
## Sales tax: ↑

Project ECC 2022 collections are estimated to be **\$13.5M, up \$.7 M**



# Financial Metrics

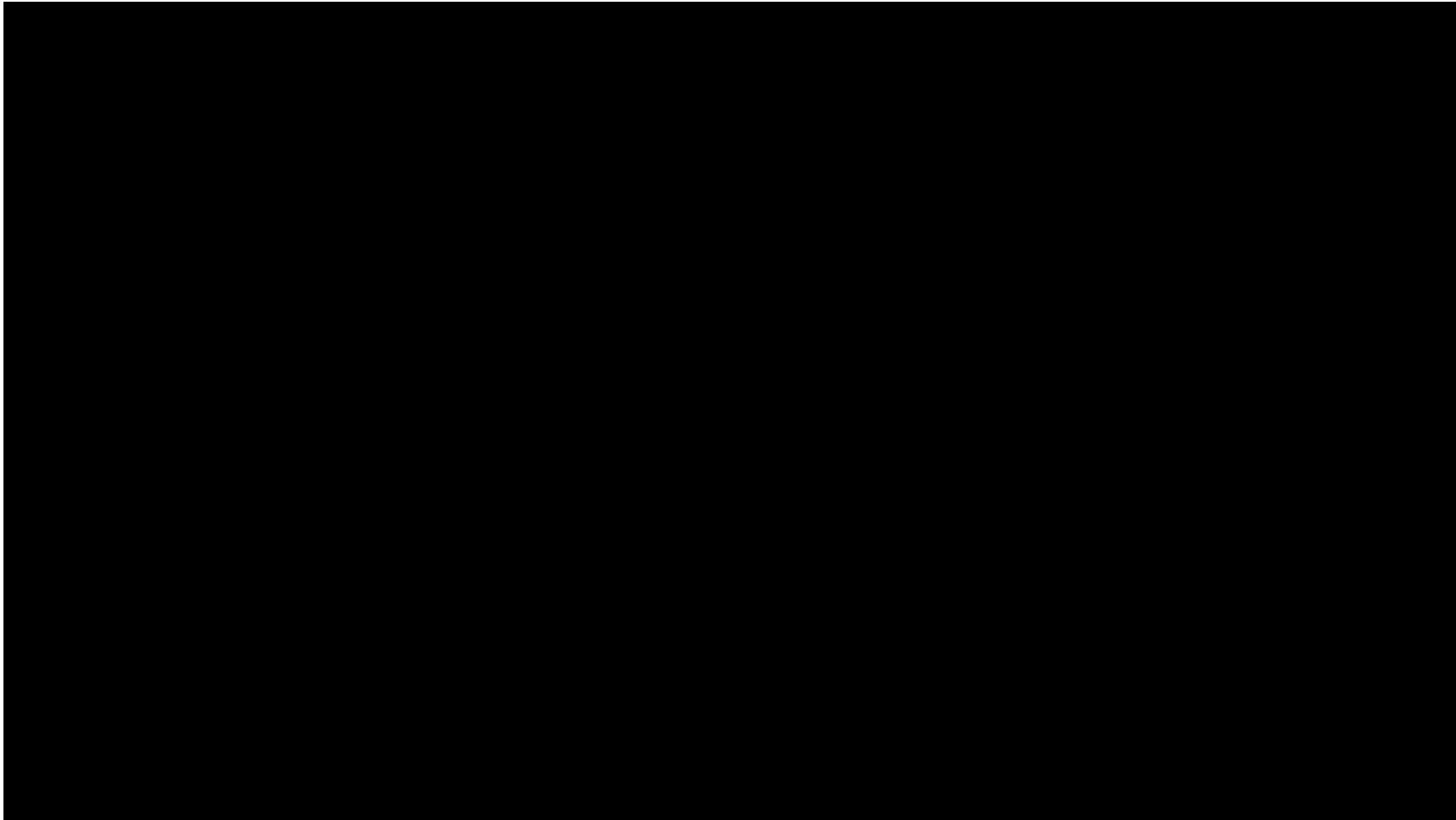
2022 General Fund Activity Projections  
Trended Activity 2018-2022



# Financial Metrics

Year	Total Levy Per Capita	Total Revenue Per Capita	Total Expenditure Per Capita	G.O. Debt Per Capita	Debt As % of Equalized Value
2017	\$ 295	\$ 1,043	\$ 1,153	\$ 792	1.10%
2018	309	1,135	1,217	813	1.08%
2019	325	1,260	1,327	826	1.03%
2020	342	1,319	1,297	805	0.96%
2021	354	1,565	1,275	985	1.10%
2022	378	N/A	N/A	905	0.96%

Year	YTY Operational Levy Change	YTY Debt Service Levy Change	YTY Total Levy Change	U.S Annual Inflation Rate	YTY Equalized Value Change	Levy As % of Total Revenue
2017	1.1%	20.2%	5.4%	2.1%	3.7%	28.3%
2018	2.7%	13.1%	5.4%	1.9%	5.2%	27.2%
2019	1.9%	15.0%	5.5%	2.3%	6.3%	25.8%
2020	2.8%	12.9%	5.9%	1.4%	5.7%	25.9%
2021	2.3%	7.7%	4.0%	6.8%	6.8%	22.7%
2022	2.0%	17.8%	7.3%	7.0%	7.2%	N/A



# 2022 Key Accomplishments

# Elected Officials

Sheriff Dave Riewestahl



District Attorney Peter Rindal



Judge Beverly Wickstrom



# 2023 Investments

## Priority areas



### Quality of Place

Parks and Forest  
Recreation – Access for all  
Highways and Airport  
Economic Development



### Institutional Capacity

Cybersecurity and Information Systems investments  
Staff required for 6<sup>th</sup> courtroom



### Human Services

Expanded Crisis Services  
Outreach and in-home therapy  
Youth Justice focused R.E.D.  
Changes in Economic Supports (\$1.2M/month)



### Public Safety

Additional Patrol Deputies  
Recreational Patrol  
Jail Lieutenant



### Human Resources

Work With PURPOSE

# ALLOCATION OF COUNTY ARPA FUNDS

# COUNTY \$14.6M

## County Investment

- 2022 CAPITAL PROJECTS \$7.7M
- 2023 CAPITAL PROJECTS \$1.7M
- EMERGENCY RESPONSE, GOVERNMENT  
INFRASTRUCTURE, and ADMINISTRATION  
\$1.0

INTERNAL PROJECTS \$4.2M

- Capital projects; public health response; monumentation
- Senior living in Fairchild, water quality testing, Public Health lab expansion, Meals on Wheels, Criminal Trial backlog
- Emergency radio communications network; Sheriff radio from analog to digital
- Innovative/future savings/administrative efficiencies/new service delivery models. i.e. solar/EV chargers, Hybrid meeting room technology

# ALLOCATION OF COUNTY ARPA FUNDS

## COMMUNITY PARTNERSHIPS

\$2.3M

### Recovery Dollars

- \$5,000 grants were made to small businesses and nonprofits impacted by the pandemic.
- 89 of the 96 applications met the criteria set forth by the ARPA Committee and were awarded funds for a total amount of \$445,000

### Investments in Community Partnerships

- \$1 million was set aside to provide \$10,000-\$100,000 grants to small businesses and nonprofits to create innovative responses to community need due to COVID-19.
- 24 of 59 applications received were awarded funds totaling \$1,763,500 for both County businesses and nonprofits

# ALLOCATION OF COUNTY ARPA FUNDS

# BROADBAND

# \$2.9M

## Match to Local Government

- Have committed over one million dollars as matching funds for broadband infrastructure projects.
- The Broadband Committee continues to explore opportunities to support expanding broadband services in under-served rural areas.

## Equity Projects

- United Way of the Greater Chippewa Valley Digital Equity Project

Investment of *\$99,576.25*



A rural landscape featuring a large brown barn and two tall grey silos in the background, set against a clear blue sky. The foreground consists of a green field and a brown field. A large, semi-transparent blue circle is overlaid on the right side of the image, partially obscuring the barn and silos.

# WHAT'S HAPPENING WITH RURAL BROADBAND IN EAU CLAIRE COUNTY?

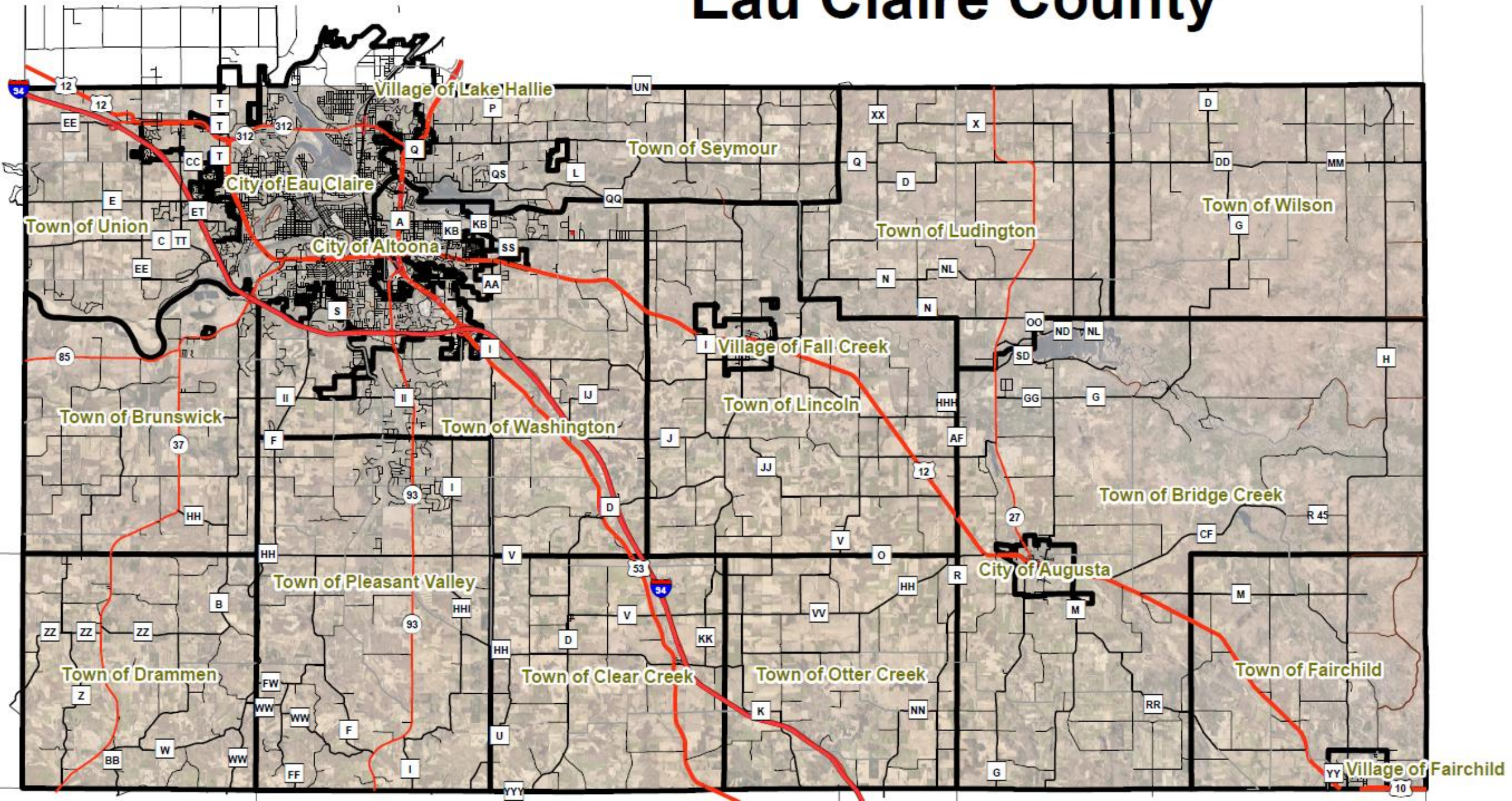
**RODNEY J. ESLINGER**

**DIRECTOR OF PLANNING AND DEVELOPMENT**

**BROADBAND COMMITTEE CLERK**



# Eau Claire County

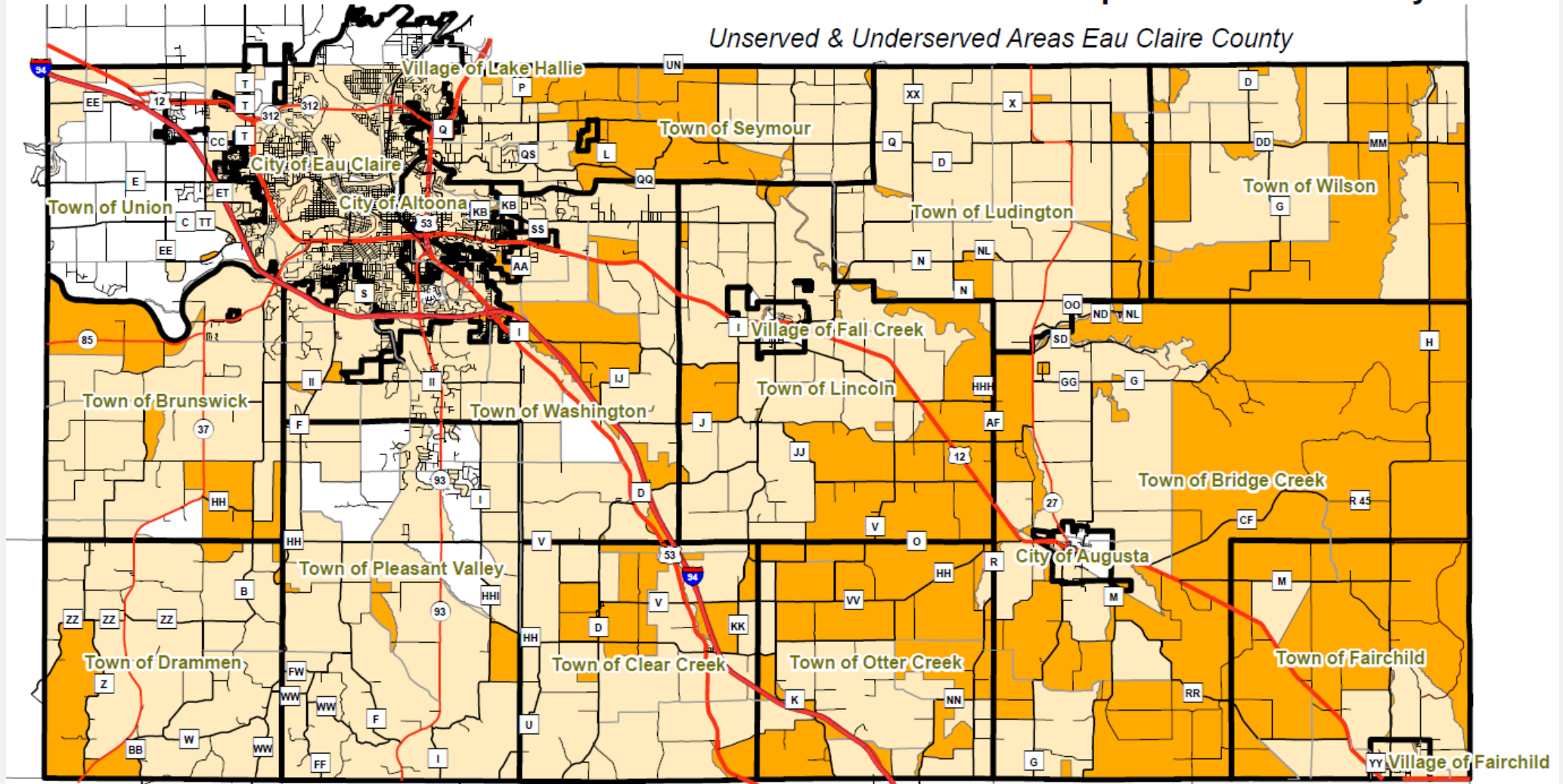




Looking Back:

# 2020 Broadband Internet Service Map - Eau Claire County




Unserved & Underserved Areas Eau Claire County



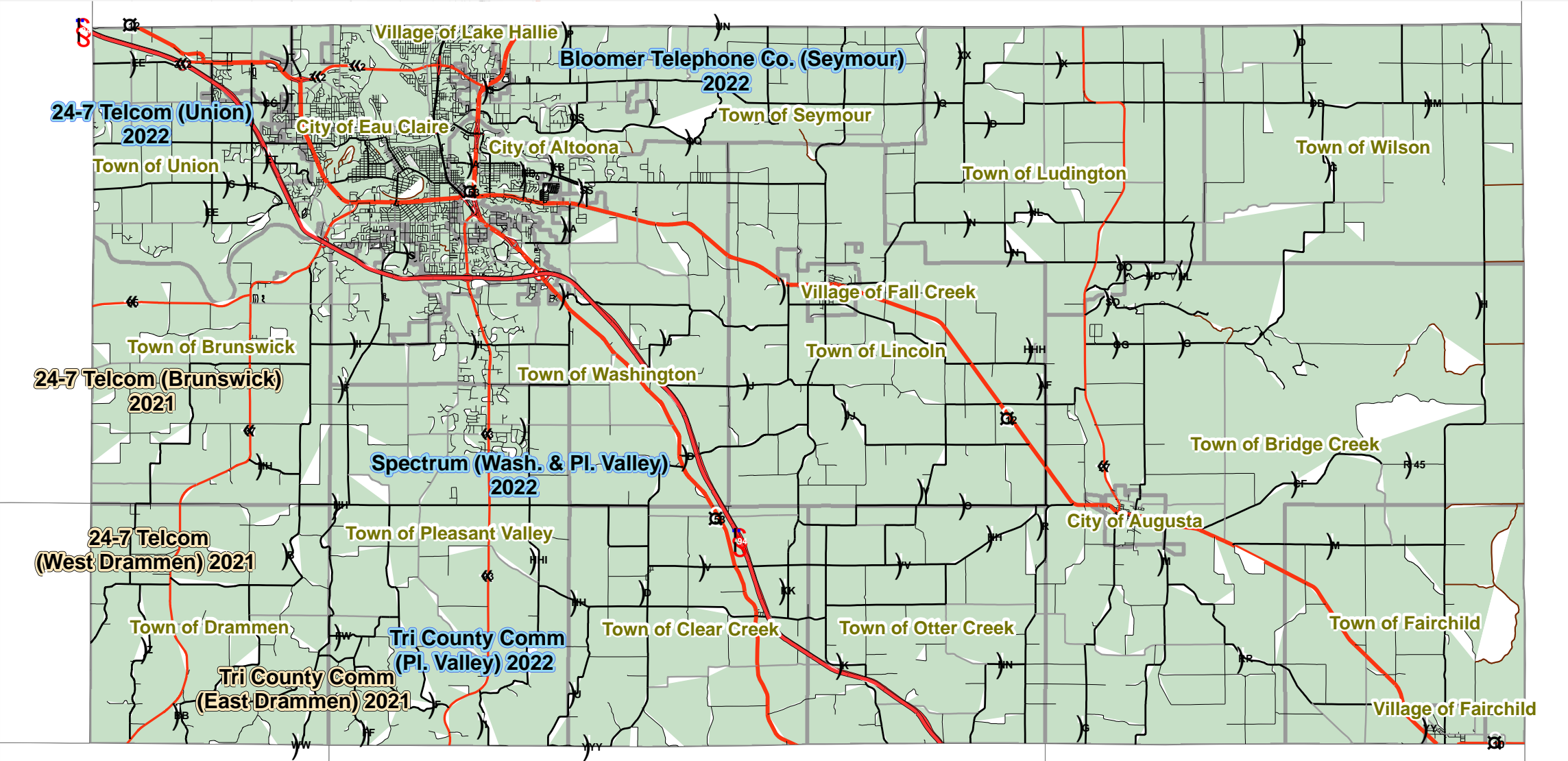
NOTE: Data source for broadband unserved and underserved areas is Wisconsin Public Service Commission. The data is related to broadband expansion eligibility for fiscal year 2020.



0 2.25 4.5 9 Miles

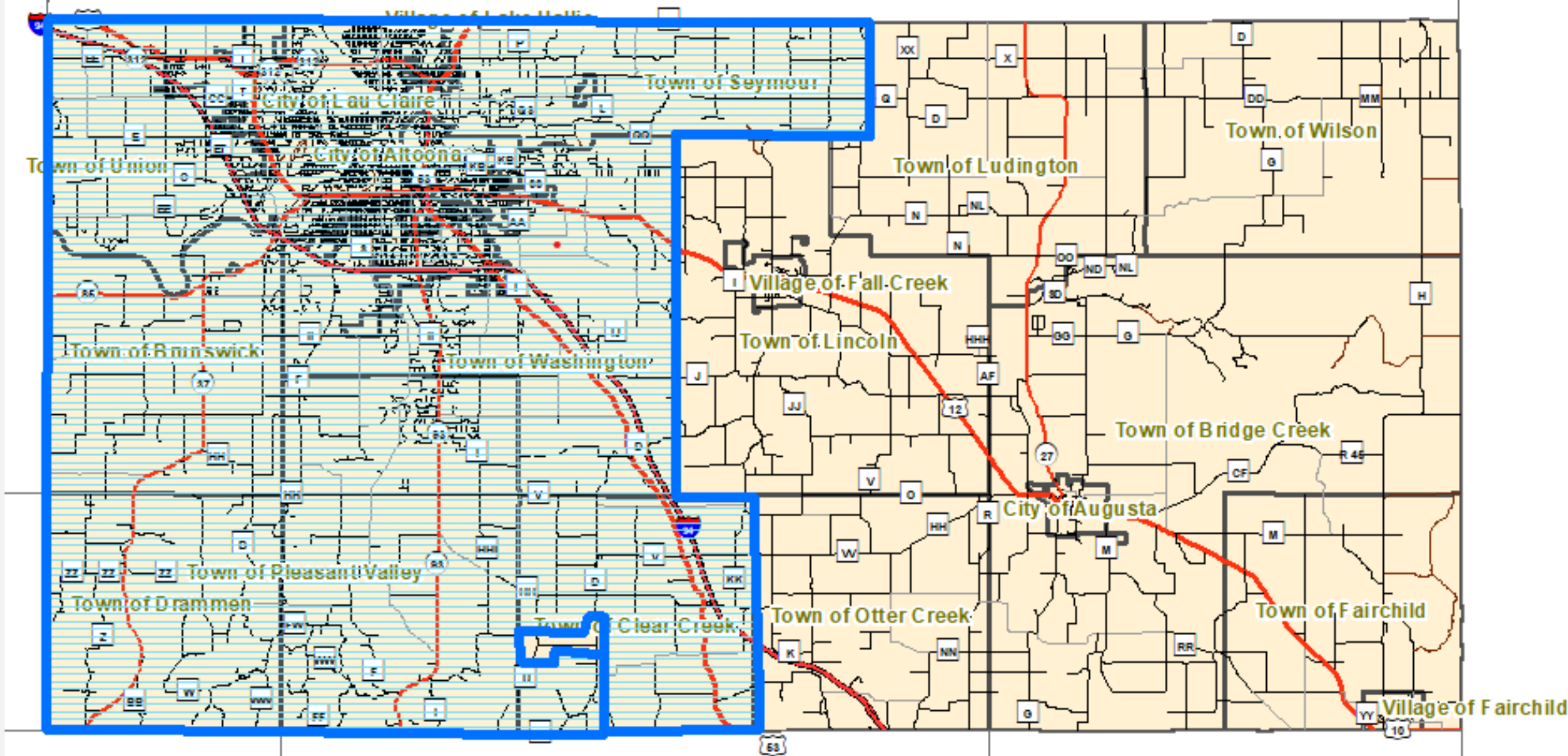
-  Civil Division
-  Broadband Un-served Areas 2020
-  Broadband Under-served Areas 2020

# 21' & 22' Awarded PSC Broadband Grants

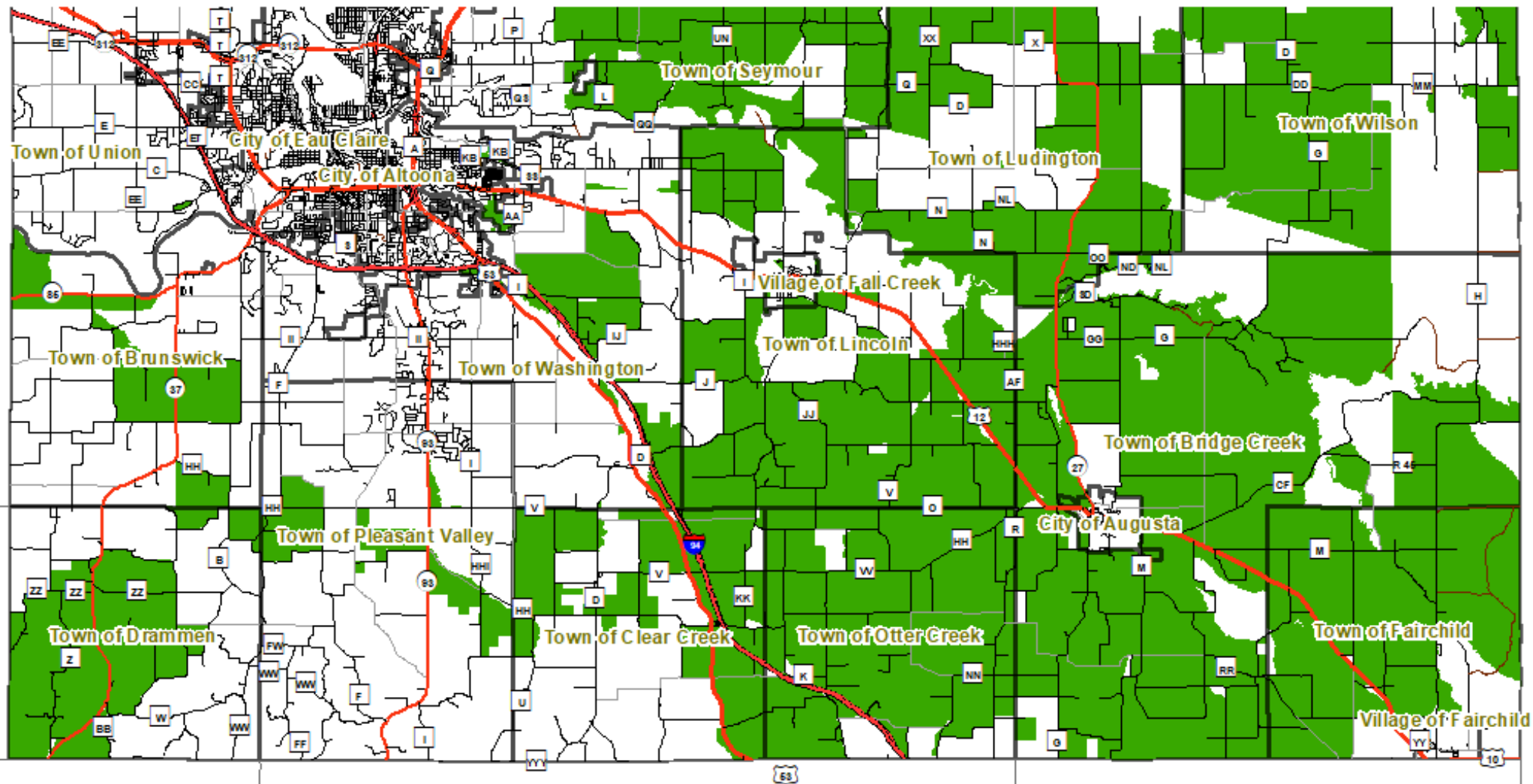


Combined, the six towns and County have committed approximately 2.2 million dollars of ARPR matching funds to these projects.

# Current work covers 70% the County's population







**Spectrum's Rural Digital Opportunity Fund (RDOF)**



# Current and future projects:

- United Way Digital Equity and Inclusion Initiative (programming available to all Eau Claire County residents)
  - Affordable and reliable **Broadband** internet service
  - Support the supply of cost-efficient and internet capable **Devices**
  - Increase access to **Digital Literacy** training for usage of devices
  - Provide quality Technical Support to support the users with device issues.
- Continue supporting Internet Service Providers (ISPs) with their grant applications to expand high-speed broadband services in eastern Eau Claire County outside of the RDOF.



# Thank you

Contact Information:

Email: [Rod.eslinger@eauclairecounty.gov](mailto:Rod.eslinger@eauclairecounty.gov)

Ph: 715-839-1657

Eau Claire County Broadband Committee webpage: [Broadband Committee | Eau Claire County](#)



# Wisconsin Opioid Settlement Funds

Over the last several years, Wisconsin counties have led the effort to hold opioid manufacturers, distributors, and retailers responsible for their respective roles in the opioid epidemic.

In 2021, the legislature approved, and the Governor signed legislation (**2021 Wisconsin Act 57**) outlining the distribution and use of settlement funds currently **around \$50 Billion**. *Payments will be made over 18-years. Looking at accelerated payments*

Proceeds are split **70% to the counties** and litigating municipalities and **30% to the state**

The 70% share is allocated to the 71 counties and 16 **litigating municipalities according to the MOU executed in 2021**

## Eau Claire Opioid Abatement Taskforce

- Resolution created
- 11 members appointed by county board
- Tasked with recommending uses of the settlement funds to be used for opioid abatement purposes such as expanding addiction treatment, increasing adoption of clinical best practices

---

## Rural Partners Network

---

The Rural Partners Network (RPN) is an all-of-government program that helps rural communities find resources and funding to create jobs, build infrastructure, and support long-term economic stability on their own terms.



# Northwestern Wisconsin Community Network



# Where does your 2023 County property tax dollar go?

The County mill rate for property tax year 2023 is \$3.688 per \$1,000 of equalized property value

County property tax on a \$289,000 home

Home value*	\$	289,000
Mill rate	\$	3.688
County property tax	\$	<u>1,065.77</u>

\*Median home value for Eau Claire County at 09.20.22,  
per [https://www.realtor.com/realestateandhomes-search/Eau-Claire-County\\_WI/overview](https://www.realtor.com/realestateandhomes-search/Eau-Claire-County_WI/overview)

These tax dollars would be allocated according to the 2023 budget, as shown below.

<u>Functional Area</u>	<u>% of Levy</u>	<u>Property Tax Support (\$)</u>
Public Safety	33.70%	\$ 359.16
Transportation & Public Works	23.87%	254.39
General Government	17.35%	184.86
Health & Social Services	16.58%	176.73
Culture & Recreation	4.10%	43.73
Judicial	3.84%	40.93
Conservation & Economic Development	0.56%	5.96
<b>Total</b>	<b>100.00%</b>	<b>\$ 1,065.77</b>

Chart shows reallocating the debt service levy



# THANK YOU!

[www.eauclairecounty.gov](http://www.eauclairecounty.gov)



Photo: Randy Lee